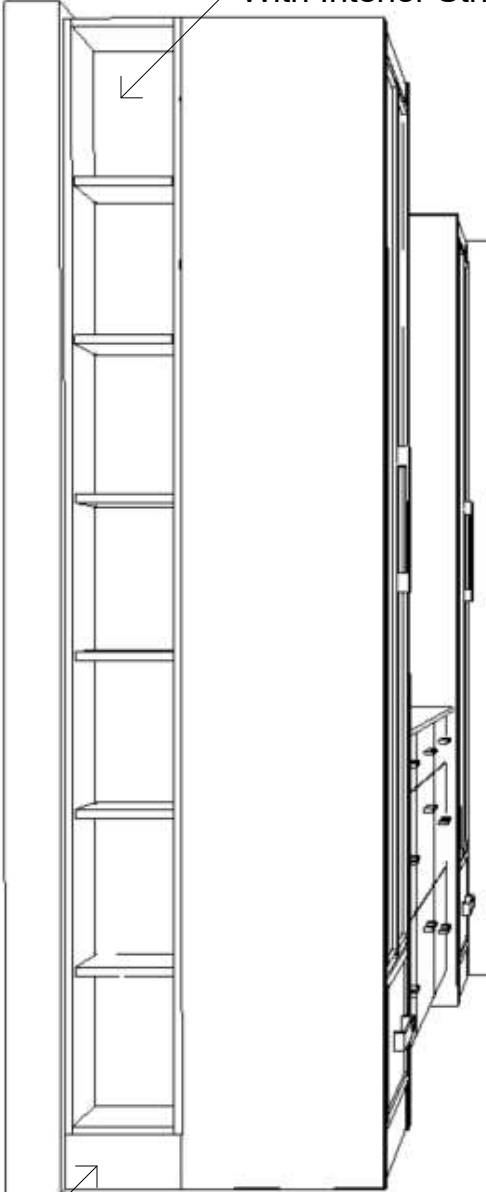
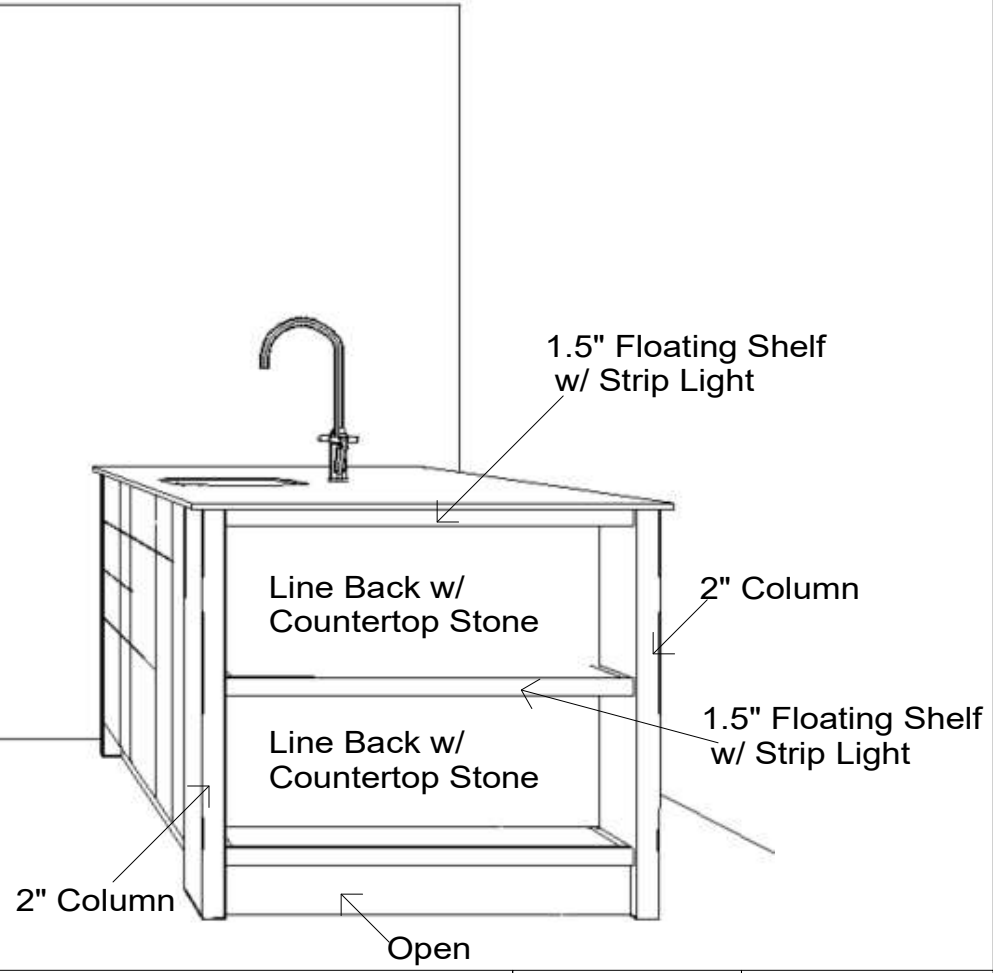


12" deep, 11" wide
Tall Open Cabinet
With Interior Strip Lights



Install M-CB
As Flush Toe Kick



1.5" Floating Shelf
w/ Strip Light

Line Back w/
Countertop Stone

2" Column

Line Back w/
Countertop Stone

1.5" Floating Shelf
w/ Strip Light

2" Column

Open

Note: This drawing is an artistic interpretation of the general appearance of the design. It is not meant to be an exact rendition.



Designed :3/12/2026
Printed: 3/12/2026